



*Time to Act*  
*7<sup>th</sup> National Farm Health & Safety*  
*Conference*

# ***Occupational Safety and Health Responsibilities***

Presenter: Bill Mitchell  
Manager, Legislation and Policy



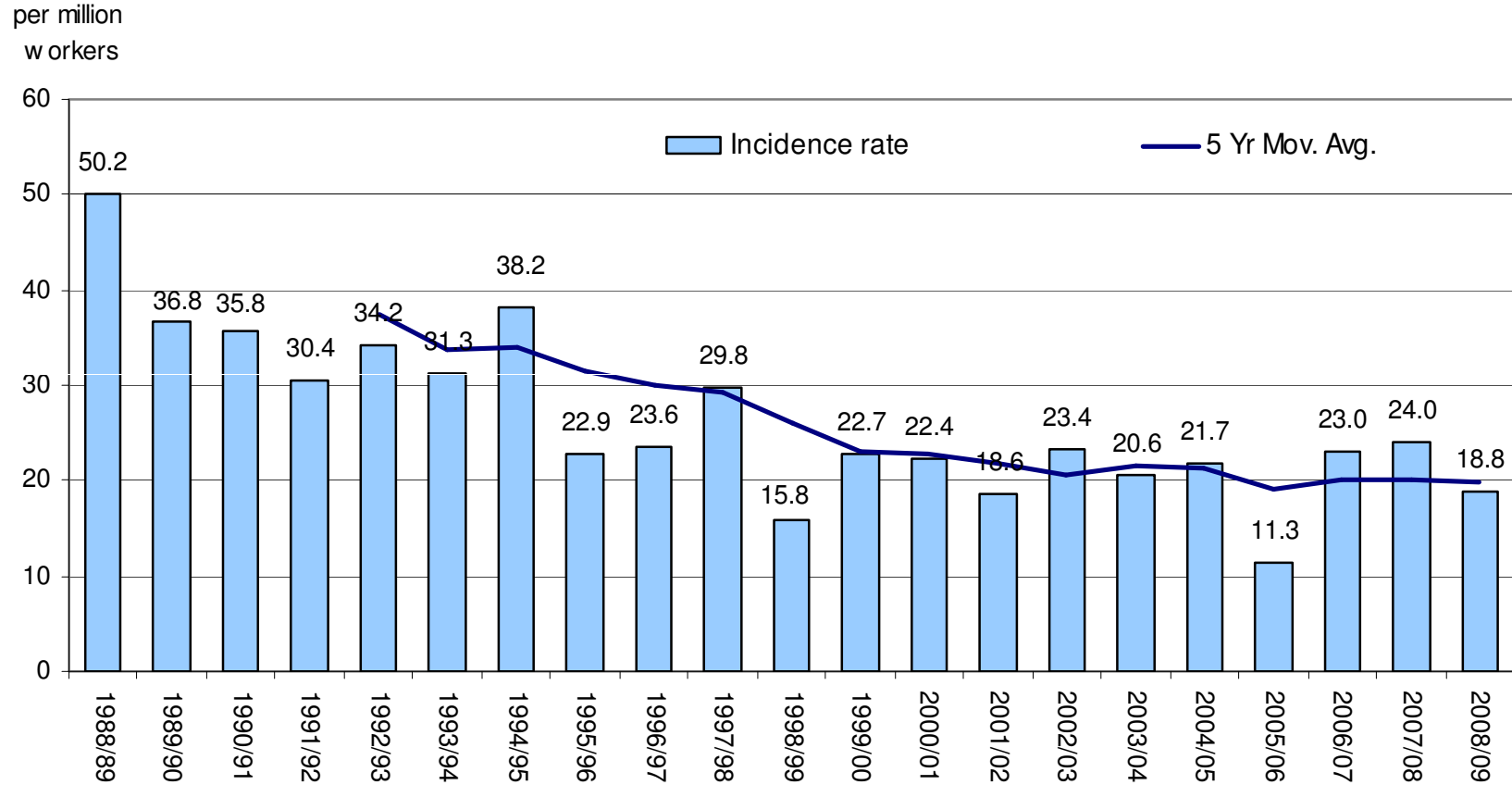
# *Presentation Outline*

1. Western Australia's occupational safety and health performance
2. Compliance framework
3. Who is responsible for workplace safety and health?
4. Actions – Priority Areas.
5. ThinkSafe Small Business Strategy
6. National Model Occupational Safety and Health Laws



# Western Australia's Performance

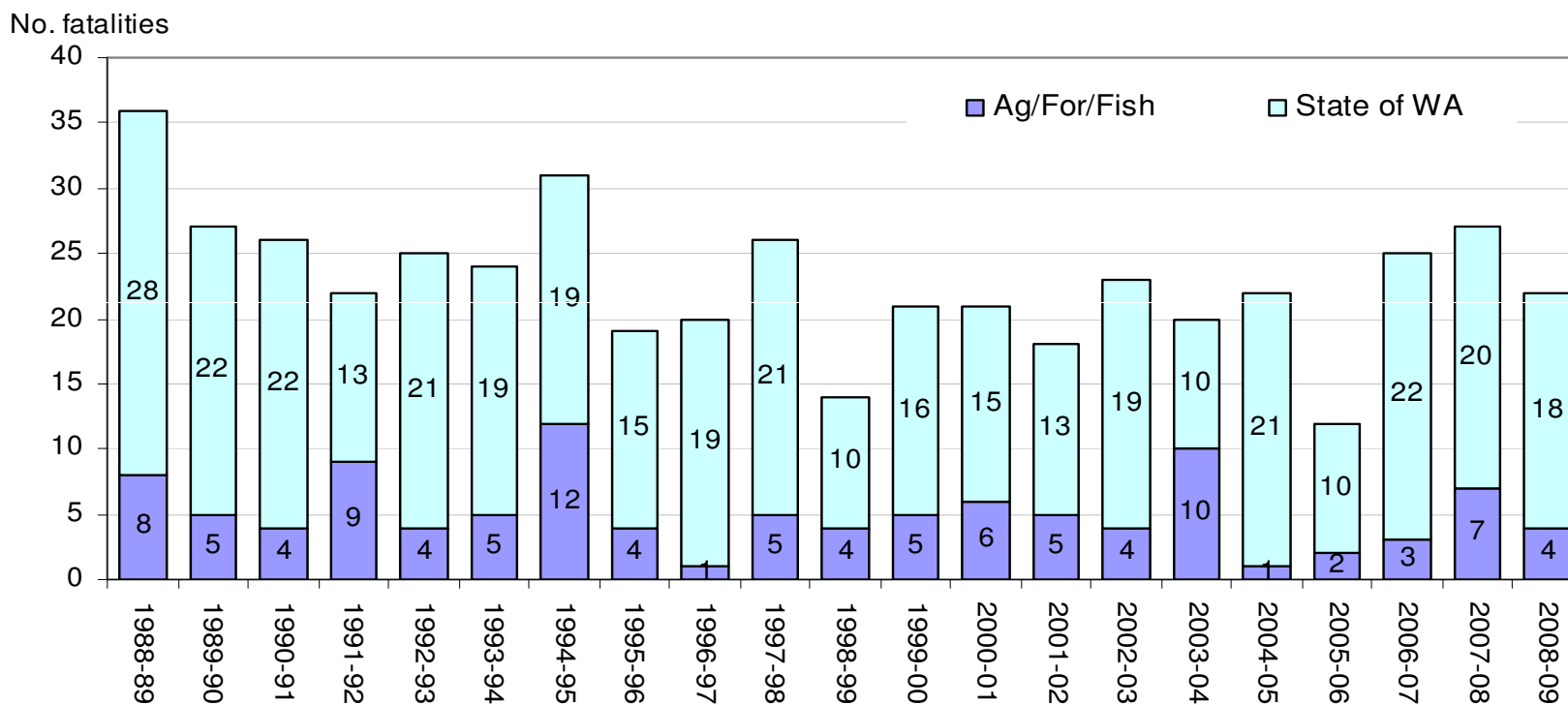
## Traumatic Work-related Fatalities





# Western Australia's Performance

## *Traumatic Work-related Fatalities – Agriculture, Forestry & Fishing industry*

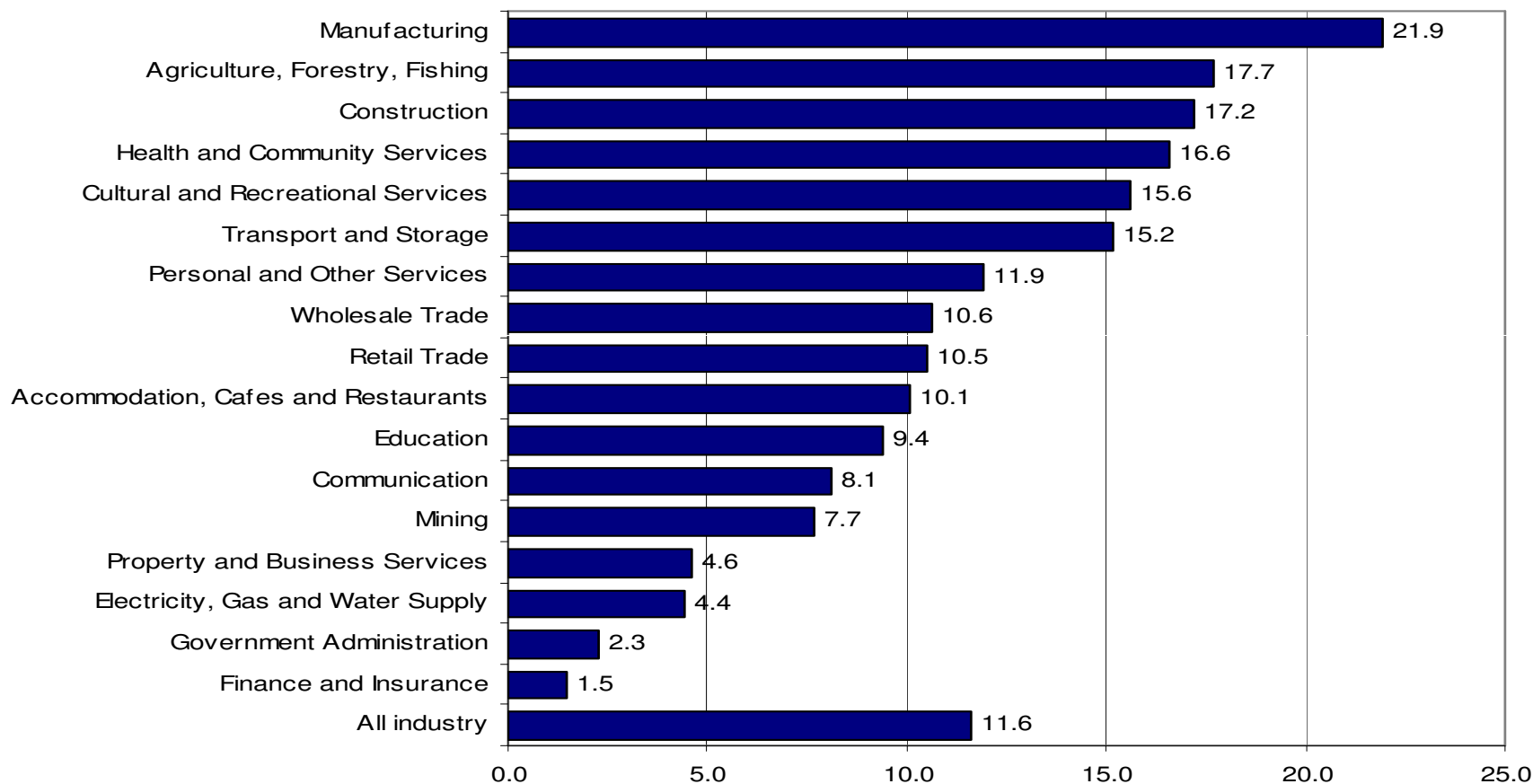


Source: data collected by WorkSafe  
Department of Commerce



# Industry Profiles

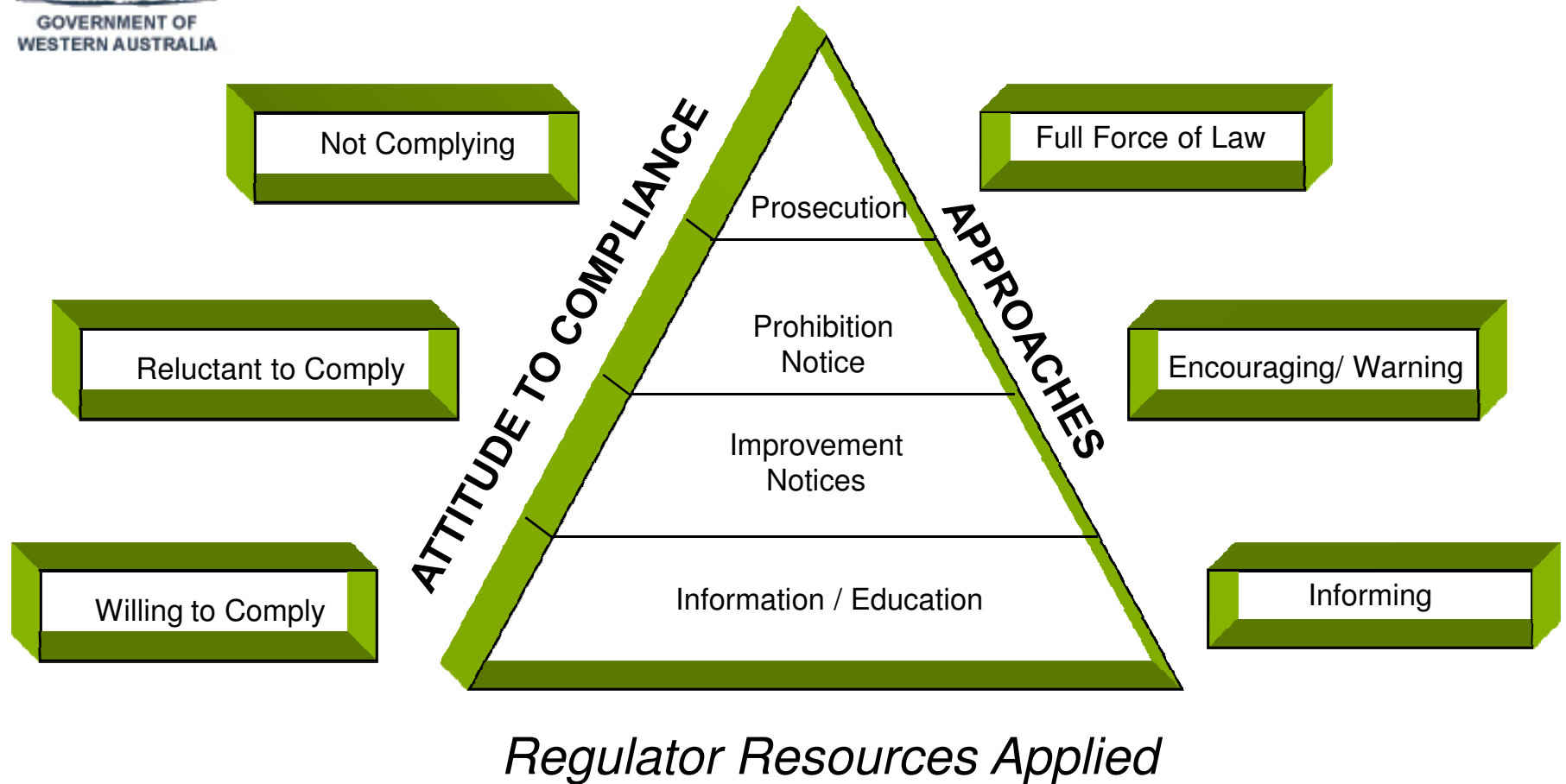
Work-related LTI/Ds in Western Australia  
Frequency Rates (LTI/Ds per million hours worked): 2006/07



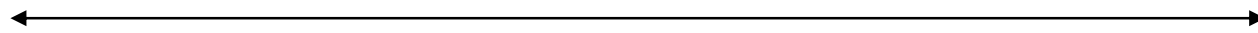
Source: Workers' compensation claim data  
Department of Commerce



# The Compliance Framework



LOW  
Willing  
Able



HIGH  
Unwilling  
Unable<sup>6</sup>



# Who is Responsible for Workplace Safety and Health

1. Traditional – Employer / Employee
2. Other Participants – Self employed, control, contract and labour hire.
3. Upstream Duty Holders – designers, manufacturers, suppliers
4. End users – reduced chance of being supplied with unsafe equipment



# Actions – Priority Areas (1)

- 1. Manual Handling** – Eliminate the lift
- 2. Slips, Trips & Falls** – Access, obstructions and footwear
- 3. New & Young Workers** – Training & supervision
- 4. Guarding** – Installed, maintained & Power take-offs!!



## Actions – Priority Areas (2)

- 5 **Working at Heights** – Remove the risk and fall protection measures
- 6 **Electricity** – RCDs and aerial spraying
- 7 **Hazardous Substances** – Read labels & MSDS
- 8 **Forklifts** – Relevant training
- 9 **Mobile Plant** – Maintain & service and do not overload



# ThinkSafe Small Business Strategy



**THINKSAFE WORKSAFE**

**ThinkSafe Small Business Assistance Program**

Would you like a **FREE, confidential and independent safety audit in your workplace?**

Apply **NOW** to make your workplace a safer place.

Department of Consumer and Employment Protection  
Government of Western Australia

WorkSafe WorkCoverWA Small Business Development Corporation

[www.worksafe.wa.gov.au](http://www.worksafe.wa.gov.au)

How safe is your property?

May 2008

**Agricultural safety and health**

**workbook and checklist**  
and information CD

Department of Consumer and Employment Protection  
Government of Western Australia

WorkSafe



# National Model Occupational Safety and Health Laws

1. Review Panel Commenced - April 2008
2. Reports October 2008 and January 2009
3. Drafting of the model legislation is progressing.
4. Workplace Relations Ministers' Council,
5. **28 September - Public comment period – Closes 9 November 2009**
6. Make a submission
7. Find out more -

[www.nationalohsreview.gov.au](http://www.nationalohsreview.gov.au) &  
[www.safeworkaustralia.gov.au](http://www.safeworkaustralia.gov.au)



# Further Information

- **All workplace participants have responsibility**
- **Time to Act – Nine Priority Areas**
- **ThinkSafe Small Business Strategy**
- **Information:**
  - Internet [www.worksafe.wa.gov.au](http://www.worksafe.wa.gov.au)
  - WorkSafe Information Centre - 1300 307 877
  - WorkSafe Publications 9327 8875
  - SafetyLine Magazine
  - WorkSafe library (Mon Fri 9am – 4pm) 9325 8742 (Sale and loan of videos)
  - Community Education Officers – 9327 8777