

Topics in this issue:

	Page
Summer road safety	1
Win an Ipod Nano	2
Member Profile	3
Alcohol at work	4
On-farm advisory service	5
Online Inductions	6
National Conference	7
Sponsors	8

PLAN AHEAD AND ENJOY A SAFE SUMMER ON OUR ROADS

With the temperatures soaring, backyard barbeques and summer parties in full swing, the Road Safety Council is reminding all drivers to take responsibility for their safety and the safety of others, and if you're thinking about enjoying a drink - plan ahead.

The number of people killed in WA in crashes involving drink driving increased by 66 per cent in 2007 and drink driving remained one of the primary factors involved in death and serious injury crashes in 2008.

Grant Dorrington, Independent Chair of the Road Safety Council, said the safest and easiest way to enjoy your night out was to plan ahead by organising a skipper and knowing what you can, and will be drinking in advance.

"Sometimes people are just not aware of how much alcohol a drink contains so it is important that you find out, know your limit and stick to it," Mr Dorrington said.

"There is a big difference in alcohol content between beer, wine, spirits and pre-mixed drinks and the definition of a standard drink varies hugely depending on what you're drinking."

Most people don't intend to drink and drive, but they may not realise how much alcohol they have in their system before they jump behind the wheel.

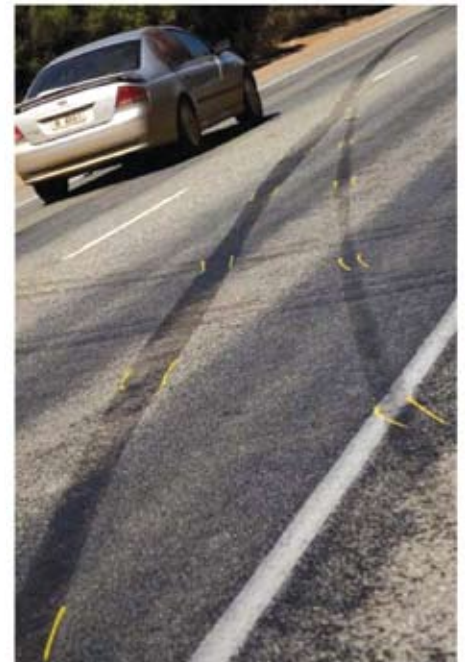
In many cases, the simplest and safest thing to do is to arrange a skipper in advance who can take responsibility for getting everyone home safely.

"For the skippers, we have plenty of information available to help them make an informed choice about what and how much they drink, if any, before they drive home."

It is a tragic fact that alcohol continues to be a major contributor to road crashes in WA.

"More than a quarter of fatal crashes involve a driver with a Blood Alcohol Concentration (BAC) greater than 0.05g/ml."

Mr Dorrington said studies have shown that you are twice as likely to crash if you have a BAC of 0.05g/ml, seven times as likely with a BAC of 0.08g/ml and with a BAC of 0.15g/ml your crash risk increases by 25.



Postal:

PO Box 118
Forrestfield WA 6058

Location:

100 Bougainvillea Ave
Forrestfield, Perth
WA, 6058

PHONE: 08 9359 4118

FAX: 08 9359 3468

Email:

farmsafe@wn.com.au

We're on the web

See us at:

www.farmsafewa.org

"It's incredibly important that drivers and riders understand how much alcohol they have consumed before they intend to travel, and what effect that has on their senses and reaction times," he said.

"There are many things you can do to ensure your safety and the safety of others."

"Forward planning is the key – be prepared and make your summer celebrations memorable for all the right reasons."

For information on drink driving in WA, the effects of drinking alcohol on driving skills and tips on how to plan ahead this summer go to: www.ors.wa.gov.au

CONTACT:

*Rachel Edwards, Office of Road Safety, 0417 939 743
or Rachel.edwards@dpc.wa.gov.au*



And remember...

MEN:

If you're driving, as a guide, drink no more than two standard drinks in the first hour and one standard drink every hour after.

WOMEN:

If you're driving, as a guide, drink no more than one standard drink every hour.

**Pour a Standard Drink for your Chance to...
win an**

Ipod Nano

Do you know what size a standard drink really is? You may be surprised!

Come and visit us at the Department of Agriculture and Food WA shed at Wagin Woolorama and see if you know your stuff!

The Office of Road Safety have kindly provided us with the opportunity to show you what size a standard drink really is. In doing so, you can enter a competition to win an Ipod Nano!

The Department of Agriculture and Food WA's theme for Wagin Woolorama this year is "Healthy Food, Healthy Planet" so make sure you see what interesting things are on show.

We will also have a range of our farm safety information such as the ATV Safety Guide, Child Safety on Farms Information, Noise Injury Prevention, Machinery Guarding Guide and much more!

MEMBER PROFILE - DAVID BOLT

After growing up in the Mallee of South Australia, my wife Chris and I moved to Western Australia in 1973 to join the rest of the Bolt family who had made the move in 1966.

We have 4 daughters who are all married with their own families, apart from the youngest.

All the girls graduated from University with degrees and along with their husbands there is quite a variety of fields.

As they all live in various parts of the state and one in Queensland, Christmas time was so much fun when we all got together.

After moving from South Australia we worked as a family with my parents and two brothers Philip and Vernon. Twenty years ago Philip left the partnership so the land was divided into 3, so that we each had our own farms. Vernon and I have continued sharing equipment and the sheep and work together quite a lot.

Our property is 1939HA of which we crop 1,000HA and run our Poll Merino Stud "Gatepines West".

Soon after arriving from SA, I soon became involved in the Corrigin Football Club, becoming a coach and then President in 1975-79, then recalled to the position for another 2 years several years later. Between those years I was President for the Eastern Districts Football League for 4 years and during that time I was P&C President for 7 years.

I then joined the PGA of WA Wool Committee and was a delegate to Farmsafe Alliance which drew up guidelines for Health & Safety in the Shearing Workplace. After a couple of years plans were adopted and it is pleasing to know they are still in use today.

During my community involvement I realized the awareness of Safety in Work and Play.

As a Shire Councillor for the past 4 years, I have come to realize that safety is a top priority at all times.

After having had employees since I started working our own farm, and in particular our current employee Kevin Uren who has been with us for 16 years, we soon realized how easy accidents can happen and how careful we all must be in the workplace.

It's amazing how expensive it is when an employee gets hurt and has time off; this has made us plan and do things in a much safer manner.



David Bolt with a hoist on the back of his ute

Ben Olsen a Farmsafe WA Consultant, gave us a safety audit, giving us some hints to improve our safety. He was quite surprised at the devices we have used on the farm for years, which included

1. Hydraulic hoist on both utes
2. Murdoch Ram Handler to help tip rams over to cut feet etc.
3. DE Engineering air operated Race for drenching, classing, vaccinating sheep
4. Harrington Crutching cradles.

These have made a vast difference to working with sheep and much easier.

The ChemCert Course and being part of the original SGS QA course also makes safety much more important.

No Place for Alcohol at Work



When attending sporting and social functions there are opportunities to ensure we don't drink and drive - CSBP have illustrated below how they do this:

For example, last year one of CSBP's Area Managers was involved in the local rural football team. A few of the team members decided to chip in and buy an old but roadworthy minibus to transport them to and from matches. This meant everyone shared the responsibility of being skipper, and family and friends knew that the players had a safe ride home.

But what about fitness for work in the farm workplace? Do farmers and workers take seriously the fact that excessive alcohol can impair reaction times and ability to perform routine tasks and operate machinery, given potential fatigue and dehydration many hours after consumption?

Random testing

At CSBP, we have introduced a Drug and Alcohol Policy to continue to increase the safety of our workplaces. This policy forms one part of CSBP's overall fitness for work program. Random testing for drugs and alcohol above prescribed limits ensures that everyone on site including senior management, administration, manufacturing and despatch staff, contractors and even visitors may be checked from time to time.

On our site a person is deemed to be unfit for work if they have a blood alcohol content greater than 0.02% - which is less than the 0.05% legal limit applied to the public for driving on the road.

Policy objectives

Listed below are the objectives that CSBP notes in its Drug and Alcohol Policy, as most of these may be relevant to farming enterprises.

- Maintain a safe and healthy work environment which minimises risks associated with acts or omissions by individuals who are under the influence of drugs and / or alcohol in the workplace
- Encourage personnel to manage their own fitness for work and where appropriate, to determine their own fitness for work by using self initiated test facilities
- Encourage increased awareness of drug and alcohol issues through a range of educational measures
- Provide assistance to employees through an Employee Assistance Program to aid in overcoming issues that could impair their fitness for work

- Foster and reinforce the view within the workplace that it is not acceptable to be at work while impaired by drugs or alcohol
- Contribute to CSBP's duty of care obligations to employees, visitors and contractors by providing a safe place of work
- Ensure all employees who are deemed unfit for work are managed in an effective and fair manner.

While self initiated test facilities (bullet point number two) are probably not realistic for most farming enterprises, the other objectives are likely to be.

The policy attempts to highlight that both the employee and the employer have responsibilities to keep the workplace free from alcohol and drugs.

For farm businesses, the importance of safety also flows on to the loss of productivity in the workplace. An accident with machinery which does not injure the operator may still cost the business tens of thousands of dollars in lost time, repairs and especially lost crop yield (e.g. later time of sowing or less effective weed control).

CSBP's Drug and Alcohol Policy and Procedure are available from the CSBP Website (www.csbp.com.au).

Copies of CSBP's Drug and Alcohol Policy and Procedure are available from the CSBP Website (www.csbp.com.au).



FREE ON– FARM SAFETY ADVISORY SERVICE

Our independent, qualified safety consultant is funded to visit your farm, advise you on how to avoid injuries and illnesses and provide you with a report tailored to improving safety factors in your workplace.

If you would like us to make a confidential visit please contact us.

Farm Safety - Induction Online?

Rural Enterprises and its subsidiary Rural Safe and CuBAT

(Computer Based Industry Training) offer an online safety induction system that gives employers the ability to assess how well acquainted new or existing employees are regarding on farm safety. The results of the induction can be used by the employer or manager to assist them to determine which areas a particular person may require more training or guidance.

It can also be made as a pre-employment requirement for any prospective employees before a job offer is made, thus allowing you the added benefit of knowing what level of knowledge the applicant has regarding safety matters on farm.

Since its introduction in 2004, the system has been used by many farmers and contractors throughout Australia and can be adapted to and tailored to meet any specific industry task.

A basic knowledge of computers is required – the system has been developed with this in mind. The induction itself can take up to 45 minutes to complete.

The main induction covers 14 detailed topics (although other specific modules are available)

Duty of Care	Working Alone	Alcohol & Drug Policy
Farm Chemicals	Motor Drivers License	Tractor Safety
Safety Practices	Ag Bike Safety	Hazards and Risks
Silo Safety	Manual Handling & Fatigue	Fire Safety
Working at Heights	Firearms	

CuBAT is a powerful, tailored induction program that provides employers with efficient and cost-effective compliance with OSH requirements.

KEY FEATURES of CuBAT:

- Internet or intranet accessible
- Centralised source of OHS employee data
- Full reporting of induction process and competency
- Industry standard Microsoft SQL data engine
- Differing management and security levels
- Changes are available on-line immediately
- Multimedia based for enhanced interactivity and learning
- Acceptable line speed on slower connections
- Can be introduced from any internet access point



Remember, it is an employer's legal obligation to provide safety training. Our product is there to compliment your on site employee induction and training

This is an easy to use comprehensive system and we offer a free trial to anyone who is interested. www.industrysafe.com.au www.ruralenterprises.com.au

For more information and enquiries call - **Rural Enterprises (08) 9398 8016.**

2009 7th National Farm Health & Safety Conference

Save the Date...

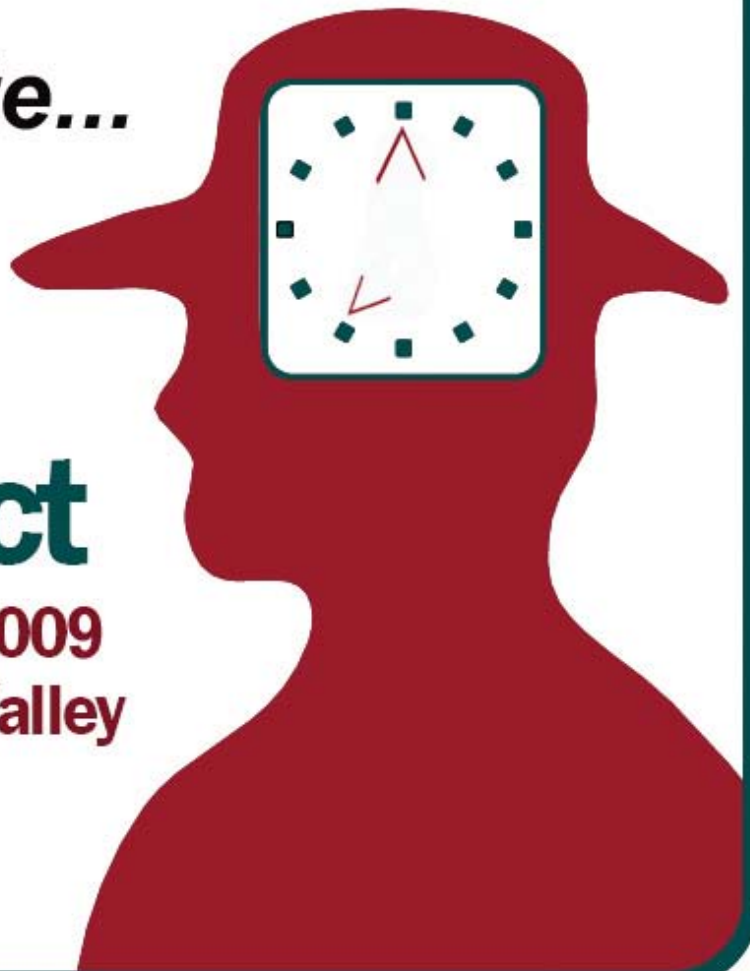
More information available shortly.

Contact Farmsafe WA Alliance for more information and for sponsorship opportunities.

Time to Act

**13th -15th October 2009
Vines Resort, Swan Valley
Western Australia**

Phone: (08) 9359 4118
Email: farmsafe_eo@westnet.com.au
www.farmsafewa.org



Community Safety and Injury Prevention Conference 2009

'Strengthening Rural and Remote WA'

Monday 29 to Tuesday 30 June 2009

Queens Park Theatre, Cathedral Ave, Geraldton Western Australia

This **free** event is presented by the Injury Control Council of Western Australia (ICCWA) with the support of the Department of Health WA. This conference series is being held annually over 2008 to 2010 to specifically focus on injury prevention and community safety promotion in rural and remote WA.

For more information and to view the call for abstracts visit ICCWA News and Events, www.iccwa.org.au

To submit an abstract send to iccwaevents@iccwa.org.au.

Abstracts Close Friday 27th March 2009

Enquiries to iccwaevents@iccwa.org.au or call ICCWA on (08) 9420 7212

SURFACE
MAIL

POSTAGE
PAID
AUSTRALIA

Farmsafe WA Alliance appreciates continued support from:



MEMBERSHIP APPLICATION

Membership of the community based organisation Farmsafe WA Alliance Inc. supports the need to make agriculture a safer industry for the future. **Members' benefits include: Bi-monthly bulletin, 10% discount on Managing Farm Safety Course, Farmsafe WA safety sticker, advance notification of upcoming events, access to resources and training opportunities.**



Name:

Address:

Phone:

Email:

\$45 Individual/Family \$

\$140 Business/Organisation \$

Additional Donation \$

TOTAL: \$

Payment can be made by cheque, credit card or internet transfer.
Internet Transfer Bank details: Farmsafe WA Alliance National Australia Bank, BSB: 086 699, Account No: 596 032 205.
Credit card payment:
 VISA MASTERCARD BANKCARD
 Card Number _____ / _____ / _____ / _____
 Expiry Date: ____ / ____
 Signature: _____

How else can you help? Do you have a specific area of interest, concern or expertise?

Volunteering Committee Promotion Local Advocate
 Child Safety Public Speaking OHS Farm Safety Website
 Sponsorship ATV Safety Noise Injury Prevention Farm Workshop Safety
 Other, please specify: _____

The income we receive through our members' annual subscriptions is vitally important to us. Your contribution will help us to effectively continue our work. We are always keen to recruit more members, - this is probably the easiest way for you to make a real difference to the work we do.
Non Profit Organisations: Contact us regarding reciprocal arrangements or fee negotiation.