



An international perspective: Injury Prevention in Swedish Agriculture

Peter Lundqvist & Catharina Alwall

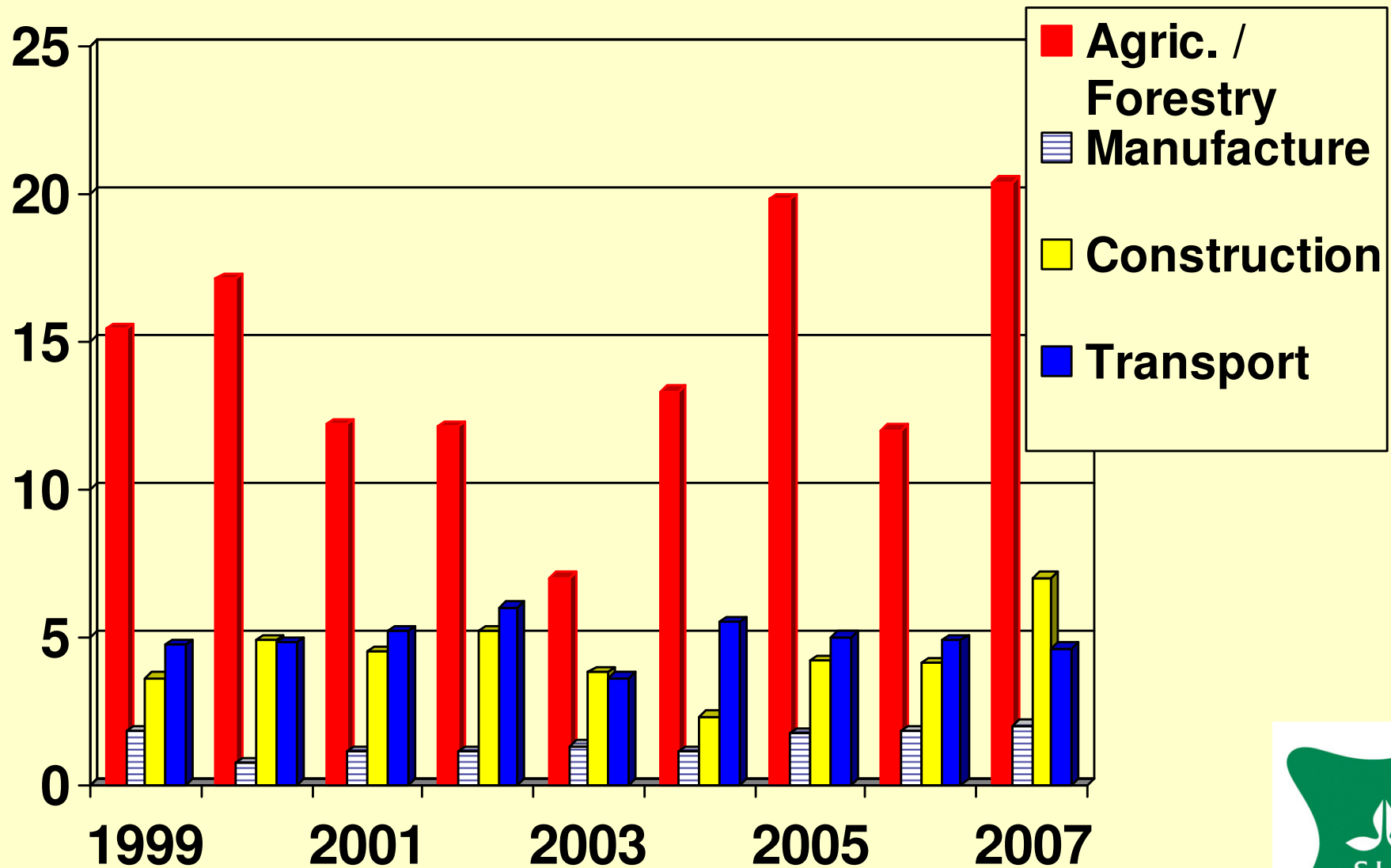
Department of Work Science,
Business Economy and Environmental
Psychology

Swedish University of Agricultural Sciences
Alnarp, Sweden

Time to Act – 7th National Farm Health & Safety Conference
13 – 15 October 2009
Vines Resort, Swan Valley, Western Australia



Number of fatal work related injuries per 100 000 employed in Sweden 1999-2007



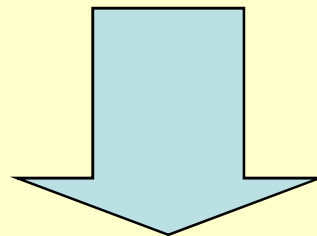
The Kuopio declaration against fatal injuries in agriculture

- By the year 2012 – there should be no fatal injuries in Nordic agriculture
 - Develop **national action plans** against injuries in agriculture involving all relevant stakeholders in the agriculture sector
 - Establish and enhance **national resource/information and coordination centres** for agricultural health and safety



Background

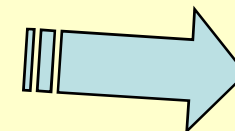
- Report on a mission from Ag Ministry
- Costs for society, 3-400 million Euro/yr
- Many small companies – no extension
- An industry with too many injuries



Center of Competence

Chainsaw training

Close farm supervision





IF YOU'RE INJURED, YOU TAKE THE FARM WITH YOU

To stay safe, visit www.acc.co.nz/rural



Inspiration

– another
important
step!

*Farm Safe NZ
&
Farm Safe Australia*



Mission to the Swedish University of Agricultural Sciences (SLU), the Swedish Institute of Agricultural and Environmental Engineering (JTI) and the Federation of Swedish Farmers (LRF):

- **Develop a system of farm advisors / educators**
- **Provide training for these persons during 2008-09**
- **Plan for a first action period (2009-2013), related to the EU Rural Development Programme**



Säkert Bondförnuft

=

"Safe Farmer Sense"



The Goal

- A reduction of the injuries with 50% by the end of year 2013 (the vision – no fatalities)

The target group

- Small and medium size farms
- Adults, seniors and children

Focus areas

- Machinery
- Animal handling
- Buildings
- Fire wood handling and logging



Not only technology - a lot of focus on:

- Stress & stress handling
- Psychosocial aspects incl. farmers mood, depression etc
- Sleeping habits, breaks, tiredness
- Eating and drinking habits
- Alcohol & medication
- Working alone & work organisation
- Previous injuries, illness & disorders
- Economical pressure
- Environmental issues, incl. weather



Step 1

Education of farm supervisors

SLU main provider with support
from JTI and LRF

Time: 2008 - 2009



Step 1, 2008-2009

- Lots- processes – How to prevent injuries??
- Supervision – make people aware
- Education of supervisors – not experts
- Pedagogic approach: *“participation driven”*
- Supervision material

In “press”:



- Participant material (for the farmer)
- A web page: ***www.sakertbondfornuft.se***
- A new DVD part 2 of “I was just going to..”

Supervisors in *Safe Farming Sense*

- Farmers, extension people & others
- Completed the education: 1+2+1 days
- About 2-15 supervisors per region
- No employment – paid by demand
– max no of hours/year

- Support by regional coordinators
- Support by each other – network
- Continuing education



Education of supervisors

Professions among applicants

- Farming (full time / part-time) 75
- Extension 28
- Ag schools & other schools 24
- Other type of business (övr.) 10
- Work environment extension 5
- Insurance, bank & consultants 6
- Work Environment Inspection. 2
- Other (health care, military etc.....)



Education of Supervisors

Places: Skåne/Scania – Uppsala – Umeå

Amount: 4 days: 1+2+1 days

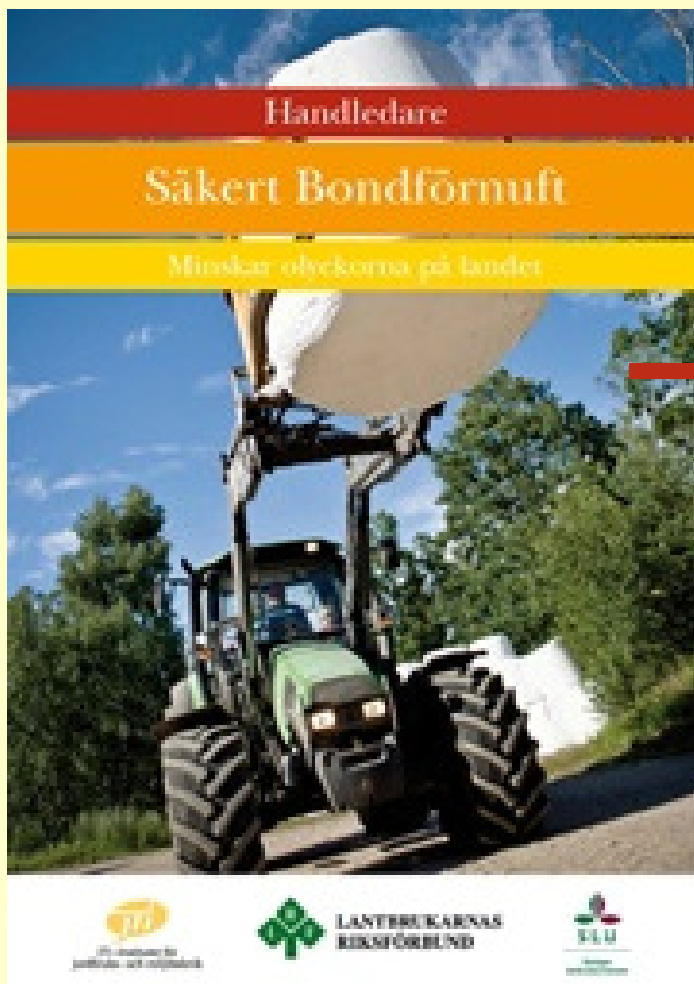
Theory is mixed with practical training

Content

- A *"participant driven pedagogic method"*
- Injury prevention – how ?
- Farmer talk about life before and after injury!
- Perspectives on the daily life of farming
- Practical exercises – role play
- Cases discussed in groups
- Home "lessons" presented and discussed



Supervisor material



Innehållsförteckning

- 1 Välkommen som handledare
- 2 Projekt Säkert Bondförnuft
- 3 Utbildning till handledare
- 4 Framtidsverkstad
- 5 Informationsmöten
- 6 Tre träffar till Säkert Bondförnuft
- 7 Individuella gårdsbesök
- 8 Gårdsvandringar

Lantbrukets arbetsmiljö

- 9 Fakta och statistik
- 10 Prioriterat område: Maskiner
- 11 Prioriterat område: Djurhantering
- 12 Prioriterat område: Byggnader
- 13 Prioriterat område: Skog och ved
- 14 Riskgrupper
- 15 Ergonomi, damm, buller, vibrationer
- 16 Psykosocial arbetsmiljö & ledarskap
- 17 Fallbeskrivningar 1-15
- 18 Systematiskt arbetsmiljöarbete
- 19 Anteckningar och övrigt material
- 20 Kontakter



Supervisors missions

- Information meetings
- Farm walks (group events)
- The short course:
"Three steps to "Safe Farmer Sense"
- Individual farm visits



Step 2

The action program until year 2014



- LRF as the project organisation provider
- Economics – EU Rural Development Program
- Project organisation – with coordinators
- Communication of the program
- Carrotts!!

- Marketing – full effect – right now
- Deals for farmers is coming & coming



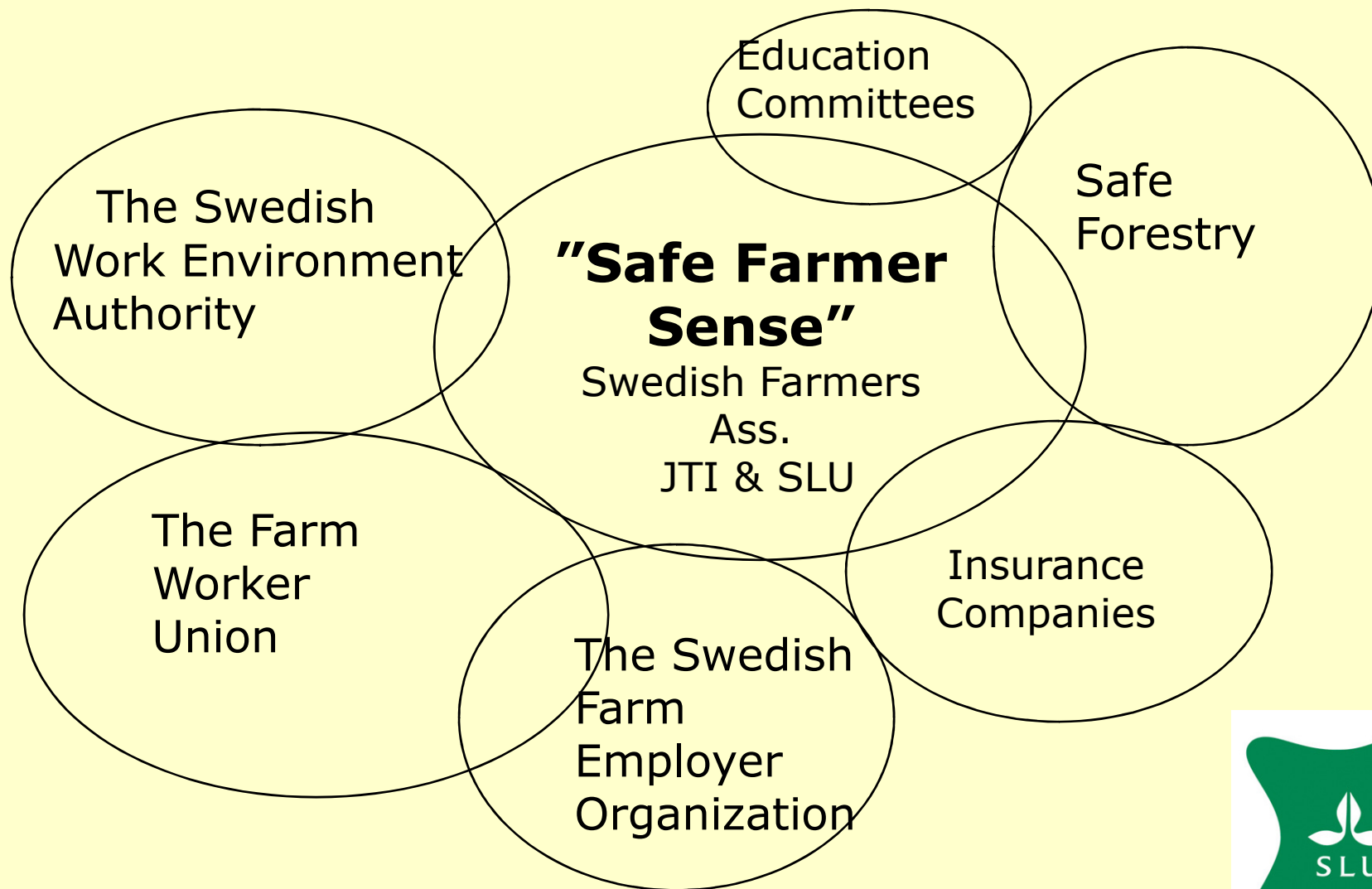
All Swedish Agriculture The Ag industry, Authorities Organisations

A joint mission against injuries

Now – or never



A joint mission against injuries



The farm – still the best place to grow up – *if you survive!*

SOME CHILDREN NEVER GROW UP ON THE FARM.



HSE
Health & Safety
Executive

REDUCING RISKS. PROTECTING PEOPLE.

Every year, five more British families have to face their worst nightmare. A child killed or injured in an accident that could so easily have been prevented. And for many, there is the painful and wordless permanent reminder of how dangerous a working farm can be for the young. Don't put your kids at risk. Call 01787 384400 for your free HSE child safety booklet and checklist. IT'S YOUR LIFE, YOUR FAMILY, YOUR LIVELIHOOD – FARM SAFELY.

Thank you!

HSE, UK

